

WOODLAND MIDDLE SCHOOL

February 2024



Election Day is February 13th.
Remember to VOTE!

Updates From the Attendance Office!

Attendance in school is crucial for a student's academic success and overall development. Regular attendance ensures that students receive consistent instruction, participate in classroom discussions, and engage with their peers, all of which contribute to a comprehensive learning experience. Additionally, attendance fosters a sense of responsibility, and other skills that are vital for success in both academic and professional settings.

It is essential for parents and guardians to be aware of the state guidelines regarding school attendance to support their child's educational journey. According to these State guidelines:

- After one unexcused absence, the school is required to notify the family in writing.
- The state allows fifteen absences in a school year; after that, a doctor's note is necessary for any additional absences.
- After three unexcused absences, families will be notified by the District's Student Engagement Coordinator.
- Between two and seven unexcused absences, appropriate steps must be taken including the use of WARNS or other assessments, date-informed interventions, or convening the IEP or 504 team if applicable.
- Seven unexcused absences in a month may lead to an agreement with the student and parent, establishing attendance requirements.
- After seven unexcused absences in a month and not later than fifteen in a school year a Truancy Petition can be filed with the Juvenile Court.

Parents and guardians are encouraged to communicate with the school office through various channels, such as phone calls, Skyward absences requests, or emails, to stay informed and address any attendance-related concerns promptly.

Change of After School Plans or Need a Message Sent to a Student?

Please call the office before 2:25 pm.

The end of the day is extremely busy in the office. It can be a challenge to ensure students receive their messages.

The safety of each student is our most important priority. To ensure all students are making it home safely, we will no longer be allowing last minute changes to afterschool plans. All phone calls home will need to be made during lunch/free15 and all bus notes will need to be stamped prior to 2:25 pm.

Important Dates

Thursday, February 8
School Board Meeting
6:30pm

Monday, February 19
Presidents Day Holiday
No School

Friday, February 23
Spirit Day
Crazy Hair day

Tuesday, February 27
8th Grade WHS Visit
Time TBD

Wednesday, February 28
Parents Night
Incoming Freshman
WHS 6pm – 7pm

Thursday, February 29
5th Grade Field Trip

Friday, March 8
No School
Non Student/Staff Day

Thursday, March 14
School Board Meeting
6:30pm

Thursday, March 21
A Night of the Arts
WHS Commons
6:30pm – 8:30pm

Friday, March 22
Spirit Day
Dress Alike Day

March 26 – 28
Spring Conferences
Times TBD

March 26 – 29
Early Release @ 12:25pm

April 1 - 5
Spring Break



February Character Trait

Empathy

This month's focus is Empathy. One way to think about Empathy is "understanding and connecting with other people's feelings." Empathy is a practice that can help us grow strong relationships. Empathy is 1 of 3 traits we will focus on throughout the year that helps students Be Kind.

Throughout the school, students will be developing skills like perspective-taking, conflict resolution, and leadership.



The Woodland Way 5K

When: March 23, 2024

Time: 9:00a.m.

Where: 755 Park St. Woodland, Wa 98674

All ages are welcome! Please check the Woodland Middle School website for registration and race information.

We also have Woodland gear available for purchase on the race website. Check it out!

(All proceeds benefit the WMS Running Club)

<https://wa-woodland-lite.intouchrecepting.com/WMSWoodlandWay5K>



THE
WOODLAND
WAY

5K



Cold and Flu Season is upon us

Please keep your child home if they are not feeling well.

SICK DAY GUIDELINES

Making the Right Call When Your Child Is Sick

Should I keep my child home or send him/her to school?

Your child needs to **stay home** if he or she:

- Has a fever of **100.4** degrees or higher
- Has been **vomiting** or has **diarrhea**
- Has symptoms that keep your child from participating in school, such as:
 - Very tired or poor appetite
 - Cough that he/she cannot control or sneezing often
 - Headache, body aches, or earache
 - Sore Throat – a little sore throat is okay for school, but a bad sore throat could be **strep throat**, even if there is no fever. Other signs of strep throat in children are a headache and stomach upset, or rash. Call your doctor if your child has these signs

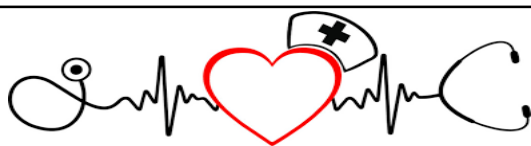
Here is a link to the most recent Covid19 guidelines:

<https://doh.wa.gov/sites/default/files/2023-02/420456-COVID19DecisionTrees.pdf>

24 Hour Rule:

- **FEVER:** Keep your child home until his or her **FEVER** has been gone **WITHOUT** medicine for **24 hours**. Colds can be contagious for at least 48 hours. Returning to school too soon may slow recovery and make others sick.
- **VOMITING OR DIARRHEA:** Keep your child home for 24 hours after the **LAST** time he or she **vomited or had diarrhea**.
- **ANTIBIOTICS:** Keep your child home until 24 hours after the **FIRST** dose of antibiotics for anything like ear infection or strep throat.

We often have many children with colds coming to school, and each one is passing their sickness to others. Please help others from becoming sick by keeping your child home.



From the Nurse

When to stay home:

- Fever of 100.4 degrees or higher
- Feels too sick to participate in school activities
- Needs fever or pain medication (like Tylenol or Motrin) to feel good
- Moderate to severe cough
- Shortness of breath
- Stomach pain
- Sore throat
- Diagnosed with COVID, flu, strep throat or pinkeye
- Vomiting
- Diarrhea
- New rash
- Bloodshot eyes or excessive discharge

If a student develops these symptoms during the school day, nurses will use their discretion to determine whether a student should be sent home.

When to return to school following an illness:

- 5 days following a COVID diagnosis if asymptomatic or symptoms are resolving (no fever, runny nose or productive cough)
- No fever for 24 hours without fever-reducing medications like Tylenol or Motrin
- Occasional cough
- Feels good enough to fully participate in school activities
- No vomiting or diarrhea for 24 hours
- 24-hours of antibiotics following a strep throat, pinkeye or ear infection diagnosis

Reporting



Absences

If you need to report your child absent, you may do so any of the following ways...

- Call the office at 360-841-2850 and leave a voicemail.
 - Send a message through Talking Points.
 - Email mclendoj@woodlandschools.org

Please include your students name, date and reason for absence.

WMS Office Hours

Monday 9:30am – 4:00pm

Tuesday – Friday 8:15am – 4:00pm



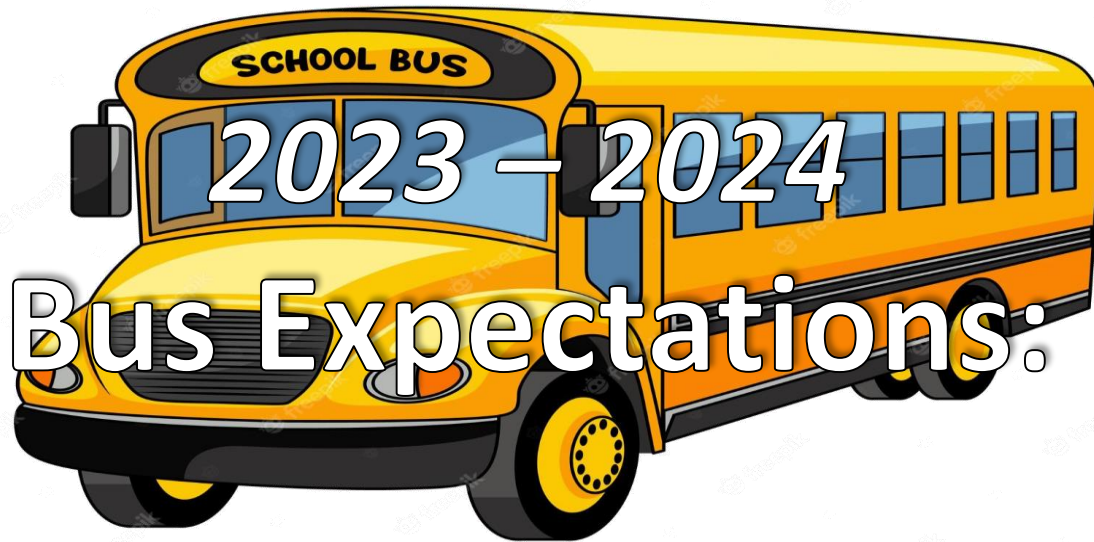
WMS Building Entry Students will enter through the commons. Monday 9:40am Tuesday – Friday 8:25am

INVEST ED

Immediate help for students in need

Invest ED is a non-profit that provides students with immediate help when it is needed most, our school utilizes the funds they provide to help students in need throughout the school year. If you would like to learn more or donate please click [here](#).

This year alone we were able to help over 20 students with the funds they provided us.



Please discuss the following rules and guidelines to help keep our bus riders safe.

Safe:

- Stay seated while the bus is in motion
- Stay out of the aisleway

Respectful:

- Voice level 2
- Follow the driver's directions
- Use kind words/polite language and actions



kwrl hiring2 (1).webp

Responsible:

- No eating on the bus
- Leave the bus clean/ Throw away trash
- Be on time

Problem solver:

- Ask the driver for help
- Tell the driver if something happens on the bus

Alternate stop:

- A note from your guardian must be stamped by the office to ride to a stop that is not your designated stop

Cellphones:

- Earbuds must be worn if you are listening to anything on your phone
- Only 1 earbud should be worn to hear the driver's directions
- Cell phones are for individual use and for emergency calls only
- Video taping other students is prohibited

✓ **\$1500 - \$3000
SIGNING BONUS
for new drivers!**

✓ **FREE and PAID
CDL Training!**

✓ **Public Employee
Benefits**

KWRL is HIRING!

\$27.87/Hour

Call 360-841-2023 or visit kwrl.org/jobs for more details

"It's time to start moving forward!"





YOUR FEEDBACK MATTERS! WHAT'S YOUR OPINION ON SCHOOL MEALS?



Woodland School District 404

For lunch menu click [here](#)

Please take a minute to provide your feedback about school meals. We want to hear from you. Your participation in this survey is important to us!

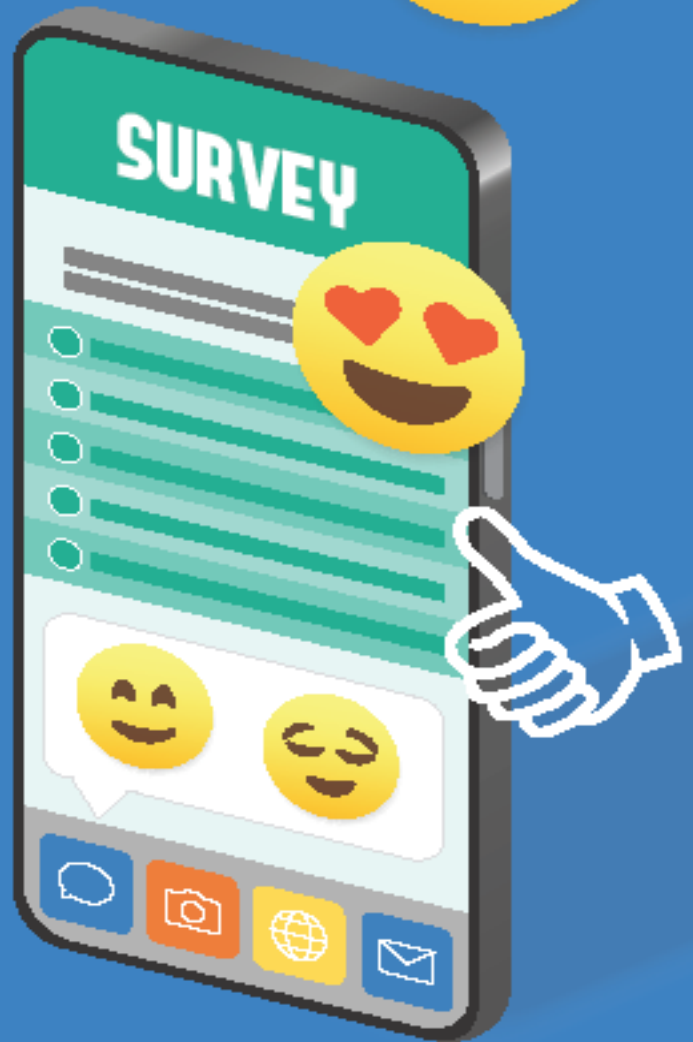
Directions:

Scan the QR code to access the survey on your phone. Follow the instructions to answer a few questions and submit.



No phone, no problem. Use this URL in any web browser to complete the survey:

<https://imo.cx/Ml7eEH9v>



We appreciate your time and thoughts!

Woodland Public School District does not discriminate in any programs or activities on the basis of sex, race, creed, religion, color, national origin, age, veteran or military status, sexual orientation, gender expression, gender identity, disability, or the use of a trained dog guide or service animal and provides equal access to the Boy Scouts and other designated youth groups. The following employee(s) has been designated to handle questions and complaints of alleged discrimination:

Vicky Barnes, Title IX Officer, Civil Right Coordinator, and Affirmative Action Officer, 800 Second St. Woodland, WA 98674, barnesv@woodlandschools.org, (360) 841-2702
Jake Hall, 504 Coordinator, 800 Second St. Woodland, WA 98674, hallj@woodlandschools.org, (360) 841-2720

You can report discrimination and discriminatory harassment to any school staff member or to the district's Civil Rights Coordinator, listed above. You also have the right to file a complaint. For a copy of your district's nondiscrimination policy and procedure, contact your school or district office or view it online at www.woodlandschools.org/policies. You can also make a complaint with the Office for Civil Rights, U.S. Department of Education, 206-607-1600 | TDD: 1-800-877-8339 | OCR.Seattle@ed.gov | www.ed.gov/ocr